



A View from the Prairie

Prairie View Care Center News
November 2006

www.prairieviewcare.com



401 South First Avenue
PO Box 68
Woonsocket, SD 57389

Meet our New Physical Therapists

We are excited to welcome Wes and Carrie Mentele to our team at Prairie View Care Center. Wes Mentele, MPT is originally from Howard, SD. He graduated with his Master's Degree in Physical Therapy from the University of Mary in Bismarck, NE. Carrie Mentele, DPT is originally from Midland, SD and is a graduate of Creighton University in Omaha, NE where she received her Doctorate in Physical Therapy. Wes and Carrie treat all outpatient therapy conditions, post-surgical rehabilitation, and sports rehabilitation. They specialize in back pain, neck pain, jaw/TMJ pain, headaches, and dizziness. Wes enjoys athletics, hunting, and spending time with their boys. Carrie enjoys reading, music, and spending time with their 2 boys, Cole and Logan.



Joseph W. Schmit



Joe is in the Resident Spotlight this month. To put a smile on Joe's face, he'd get dressed in his blue plaid shirt for his favorite meal of prime rib. Joe worked for the South Dakota Game, Fish, and Parks Department (fishery division) for 25 years.

Joe's always had a passion for hunting—deer, antelope, pheasants, and turkeys. His prize antelope was about 14" tall and had ivory tips. When it wasn't hunting season, Joe enjoyed bowling. Apparently he was pretty good at it too. His high score was 300!! Can't beat that! Way to Go, Joe!

Joe has 1 son and 1 daughter in the area. The unique thing about their families is that his son has twin sons, and his daughter has twin daughters.

We're glad to have you with us at PVCC.

Trick or Treat!!

Join us Tuesday, October 31st from 6-7 p.m. (only) for our 24th Annual Halloween Happening! All community children are invited to bring their parents and show off their costumes.



November Celebrations

- 9th Audrey Zirpel, 82
- 10th Emil Feistmer, 89
- 14th Mary Schabot
- 20th Gerald Thompson, 86
- 20th Penny Schulz
- 21st Pat Budde
- 28th Vi Goergen
- 28th Michelene Cody
- 29th Chad Stroschein
- 29th Melcolm & Elsie Larson, Married 66 Years
- 30th Brigitte Stanwyck

Welcome

New Residents

Linda DeBoer
Lloyd Schoenfelder

New Employees

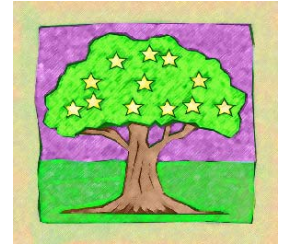
Nicole Hensler—Nurses Aide
Shannon Hoisington—Nurses Aide/Dietary



Dean Jeffrey Hanson, son of Jeff and Sherri (our business manager). Shown here with his great grandmother, resident Mary Hemminger.

The Giving Tree

Thank you to the family of Margaret Kempf for giving a bedside stand in her memory. Also, thanks to everyone who worked and supported our tailgate party fundraiser October 13th. We will be able to purchase another bedside stand with the proceeds. That brings our total to 6. As for the rest of the remodeling...the dining room is painted, and Randy is installing the laminate wood floor. It looks like hard work, but it is well worth it. Check it out when you come to visit family and friends.



Wish List

- Videos for residents
- Push cart for the kitchen
- Flower box
- Dressers
- Wire laundry basket/cart
- High-Low bed

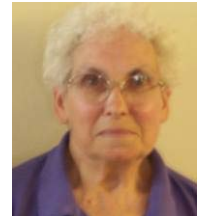
Recognizing our Finest



Randy Schabot was selected Employee of the Month by his peers for his outstanding dedication to the residents and as the fix-it man to his co-workers. Randy has been employed as Maintenance Supervisor for the last 3 years. He is married and has 4 grown children and 4 grandchildren who live in Aberdeen. In his spare time, Randy enjoys working on cars, fishing, and woodworking. He has recently finished a course for lock smiths and hopes to start a small business some day. The Center is proud to honor Randy for his dedication.



Alberta Fink and Vi Goergen were honored this month with Longevity Awards. Both have served 10 years to Prairie View Care Center. Alberta has worked in dietary and the business office. Alberta works with us as a feeding assistant. We thank them for their time and dedication to the residents here at Prairie View Care Center.



Our Sympathies go out to the families of
Marva Ball,
Harold Tastad,
and Margaret Kempf.



The loss of a loved one is never easy. You're in our thoughts and prayers.



Our Mission

Prairie View Care Center is a family of compassionate, professional caregivers who enhance the quality of life for all who enter our doors.

Our Vision

To meet the needs of those entrusted to our care

Our Values

- Honesty: Dealing with difficult situations requires open communication
- Dedication: Our ongoing, determined effort to provide quality care and constantly improve
- Compassion: A heart-felt desire to give the best possible care
- Prudence: Our obligation to offer excellent care through the best use of our resources

Administrator: Chad Stroschein/Amanda Hoffman
Director of Nursing: Dorothy Deinert, RN
Bookkeeper/Secretary: Sherri Hanson
Activities Coordinator: Dorothy Foos
Social Services: Vicki Linke
Dietary Supervisor: Heidi Dorsey
Maintenance Supervisor: Randy Schabot
Housekeeping/Laundry Supervisor: Joyce Zell

